

Honda CR-V



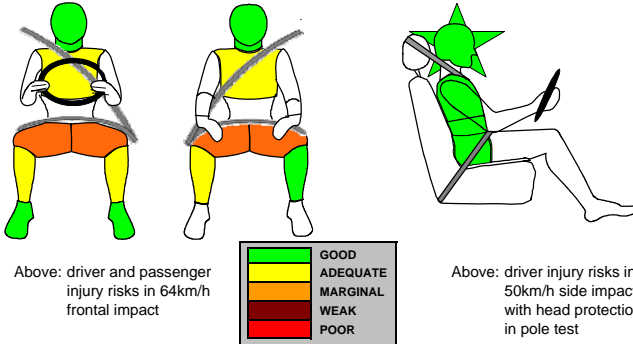
Euro NCAP Category
SMALL OFF-ROADER



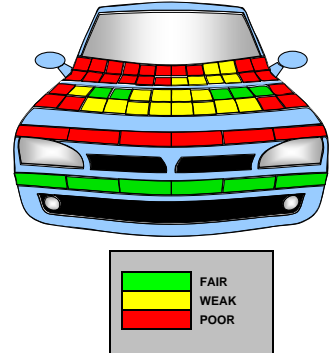
TEST RATINGS

ADULT OCCUPANT PROTECTION	SCORES:	FRONT	12 (75%)
★★★★☆		SIDE	18 (100%)
		SEATBELT REMINDER	3
		OVERALL	33
CHILD OCCUPANT PROTECTION	SCORE:		37 (76%)
★★★★☆			
PEDESTRIAN PROTECTION	SCORE:		13 (36%)
★★☆☆			



ADULT OCCUPANT PROTECTION



PEDESTRIAN PROTECTION



TEST RESULTS IN FULL	
FRONTAL IMPACT HEAD	
Driver airbag contact	stable
Passenger airbag contact	stable
Steering Wheel	
rearward displacement	none
upward displacement	none
lateral displacement	2mm to the left
FRONTAL IMPACT CHEST	
Contact with steering wheel	none
Screen pillar rearward	1mm
Passenger compartment integrity	stable
FRONTAL IMPACT UPPER LEGS, KNEES AND PELVIS	
Stiffer structures present	yes: steering column adjuster lever, ignition barrel, end of facia, glove-box latch.
Concentrated knee loading	yes: steering column adjuster lever, ignition barrel, end of facia, glove-box latch.
FRONTAL IMPACT LOWER LEGS, FEET AND ANKLES	
Rearward pedal displacement	brake - 46mm
Upward pedal displacement	clutch - 12mm
Footwell rupture	none
SIDE IMPACT AIRBAGS	
Head protection airbag	yes
Torso protection airbag	yes
CHILD PROTECTION	
Restraints used	
18 month old	Britax-Römer Baby Safe ISOFIX Plus, rearward-facing using ISOFIX anchorages and support frame
3 year old	Britax-Römer Duo Plus ISOFIX, forward-facing using ISOFIX anchorages and top-tether
CHILD RESTRAINTS FRONTAL IMPACT	
Airbag disabling/warning label	Text and pictogram label permanently attached to both sides of the passenger sunvisor
Forward head movement	
18 mth old (behind passenger)	protected
3 year old (behind driver)	protected
Chest Protection	
18 mth old: total load	good
vertical load	fair
3-year-old: total load	fair
vertical load	good
CHILD RESTRAINTS SIDE IMPACT	
Head protection	
18 mth old (struck side)	protected
3 year old (non-struck side)	protected
Head acceleration	
18 mth old	good
3 year old	good

CAR TESTED	
	
Make, model and hand of drive	Honda CR-V 2.2i-CTDi SE, RHD
Body type	5-door SUV
Year tested	2007
Kerb weight	1670kg
VIN from which Euro NCAP rating applies	Applies to all CR-Vs
Safety Equipment	Driver and passenger dual-stage frontal airbags; side impact airbag; head-protecting curtain airbag; front seatbelt tensioners and load limiters; ISOFIX and top-tether anchorages in the rear seats; front and rear seatbelt reminder system; ABS, electronic brake distribution and VSA (electronic stability control)
	

Honda CR-V

COMMENTS

FRONTAL IMPACT	The CR-V scored enough points overall for a five star rating. However, in frontal impact, it did not achieve the minimum number of points needed for that five stars. Structures in the dashboard presented a risk of injury to the knees and femurs of the driver and passenger.
SIDE IMPACT	The CR-V scored maximum points in the side impact and pole tests
CHILD PROTECTION	The passenger airbag cannot be disabled so a rearward-facing child restraint should not be used in that seating position. The presence of ISOFIX anchorages in the rear seats was not clearly marked.
SEATBELT REMINDER	The CR-V has a seatbelt reminder system for front and rear seats
PEDESTRIAN PROTECTION	The bumper scored maximum points for the protection it offered to pedestrians' legs. However, the front edge of the bonnet scored no points and the protection offered by the bonnet to adults' heads was predominantly poor.

Euro NCAP's rating applies fully only to the model with the specifications detailed here. Some equipment may not be fitted as standard to all versions in all countries. You should ensure that your car is fitted with the safety equipment you require.



www.euroncap.com